

JJC

EN

Electronic Speedlight

SF-33



Instruction Manual

Contents

For your safety.....	1
WARNINGS for flash.....	2
WARNINGS for batteries.....	3
Flash parts and their functions.....	4-6
Installing the batteries.....	7
Attach the SF33 to the camera.....	8
How to use the SF33.....	9-11
Specification.....	11
Troubleshooting Guide.....	12
Contact information.....	13

Thank you for purchasing the JJC SF-33 Electronic Speedlight. For the best performance, please read the instruction carefully before using. You must read it thoroughly and fully understand this manual to avoid improper operation lead to damage of the product.

For your safety

Before using your product, please read the following safety precautions carefully and thoroughly to ensure correct and safe use and to help prevent damage to your JJC product or injury to yourself or others. For quick reference to those who use the product, please keep these safety instructions near the product.

In this manual, safety instructions are indicated with these symbols:



WARNING

Disregarding instructions marked with this symbol could result in personal injury, or death and property damage.



CAUTION

Disregarding instructions marked with this symbol could result in property damage.

High Temperature Protection

If the flash constantly working over 10 times under full power output mode, the built-in temperature sensor will react to the high temperature automatically, in this case the flash will stop working until the internal temperature return to normal. During the stop working period, the indicator light will flash. If the indicator light flash constantly over one minute, the flash will automatic turn off, you'd better pull the batteries out to cool them down.

WARNINGS for flash

1. If corrosive liquids seep from the batteries and get in your eyes, immediately wash your eyes with running water and consult with a doctor.
2. If corrosive liquids seep from the batteries and come in contact with your skin or clothes, wash them immediately with running water.
3. Never attempt to disassemble or repair the flash unit by yourself.
4. If the flash unit is dropped and damaged, do not touch any exposed interior metal parts.
5. If you detect heat, smoke or notice a burning smell, please stop operation immediately and remove the batteries to prevent the unit from catching on fire or melting.
6. The flash unit should never be submerged in liquid or exposed to rain, saltwater or moisture unless it is properly protected from the liquids and moisture. Underwater use requires a certified underwater housing.
7. Do not use the unit in the presence of flammable or explosive gas.
8. Do not fire the flash unit directly at the driver of a moving car, as this could temporarily impair the driver's vision and cause an accident.
9. Do not fire the flash unit directly into the eyes of someone that is at close range, as this could damage their retinas. Never fire the flash unit closer than 1 meter to infants.
10. Do not fire the unit while the flash head is touching a person or object.
11. Keep small accessories out of the reach of children to avoid the possibility of the accessory being swallowed. If an accessory is accidentally swallowed, immediately consult with a doctor.
12. Do not mix battery types, brands or old and new batteries, as the batteries could leak corrosive liquids, explode or catch on fire. When using more than one battery in a product, always use identical batteries that were purchased at the same time.
13. Non-rechargeable batteries such as manganese, alkaline-manganese and lithium batteries should never be charged in a battery charger because they could leak corrosive liquids, explode or catch on fire.

WARNINGS for batteries

1. Never heat or throw batteries into fire, as this could cause the batteries to leak corrosive liquids, generate heat or explode.
2. Do not short-circuit or disassemble the batteries because this could cause the batteries to leak corrosive liquids, generate heat or explode.
3. Do not mix battery types, brands or old and new batteries, as this could cause the batteries to leak corrosive liquids, generate heat or explode.
4. Do not install batteries in the reverse direction as this could cause the batteries to leak corrosive liquids, generate heat or explode. Even if only one battery is installed in reverse it will cause the flash to malfunction.
5. Be sure to use the battery charger specified by the battery maker to avoid the possibility of batteries leaking corrosive liquids, generating heat or exploding.
6. If corrosive liquids seep from the batteries and get in your eyes, immediately wash your eyes with running water and consult with a doctor. Your eyes could be seriously damaged if they are not treated quickly.
7. If corrosive liquids seep from the batteries and come in contact with your skin or clothes, wash immediately with running water. Prolonged contact could injure your skin.
8. Always follow the warnings and instructions printed on the batteries to avoid behaviors that could cause the batteries to leak corrosive liquids, generate heat or catch on fire.
9. Never open the casing surrounding batteries or use batteries whose casing has been breached as such batteries could leak corrosive liquids generate heat or explode.
10. Non-rechargeable batteries should never be charged in a battery charger because they could leak corrosive liquids or generate heat.

CAUTION for batteries

1. Do not throw or apply strong physical shocks to the batteries as this could cause batteries to leak corrosive liquids, generate heat or explode.

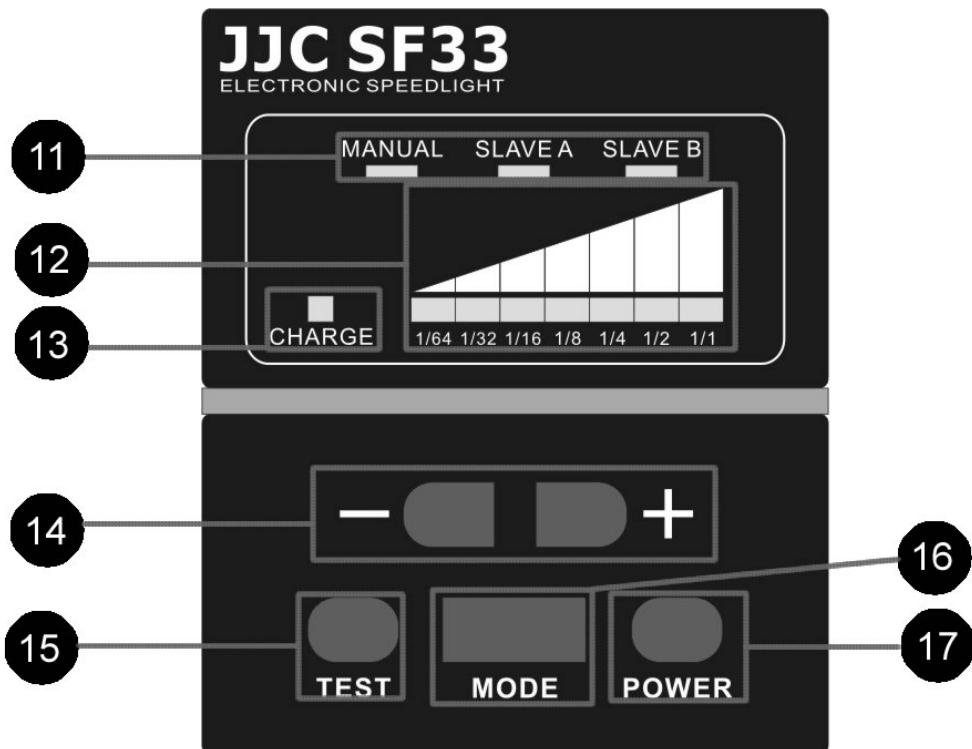
Flash parts and their functions



- ① **Built-in bounce card**
Creates a highlight in the subject's eyes in bounce flash photography.
- ② **Built-in wide-flash adapter**
Increases the angle of coverage to match a 14mm or 17mm lens.
- ③ **Optical control sensor**
For the flash using as a slave flash
- ④ **Flash head**
Can be tilted up to 90° and rotated horizontally 180° to the left or 90° to the right.
- ⑤ **Battery chamber**
- ⑥ **Hot Shoe locking ring**



- ⑦ **Flash head tilting angle scale**
- ⑧ **Display panel**
- ⑨ **Control buttons**
- ⑩ **Sync terminal**



- ⑪ **Mode select indicator**
MANUAL, SLAVE A, SLAVE B
- ⑫ **Flash Output level indicator**
1/1, 1/2, 1/4, 1/8, 1/16, 1/32, 1/64
- ⑬ **Charging indicator**
If the charging indicator is always red and charge time more than 1minute, please replace the batteries
- ⑭ **+/- buttons**
Press to increase or decrease the values of the Output.
- ⑮ **Test button**
Press to test fire the flash
- ⑯ **Mode button**
Press to select MANUAL, SLAVE A, SLAVE B.
- ⑰ **Power button**
Press for approx. 2 sec. to turn the power on and off.

Installing the batteries

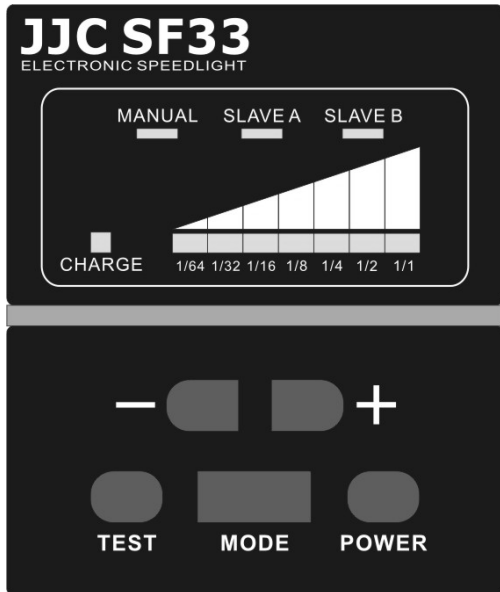


Attach the SF33 to the camera



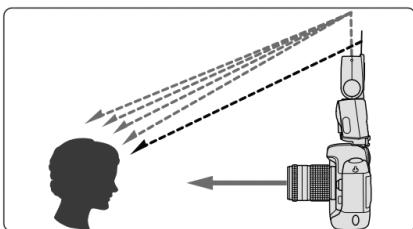
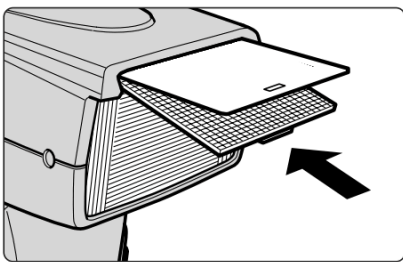
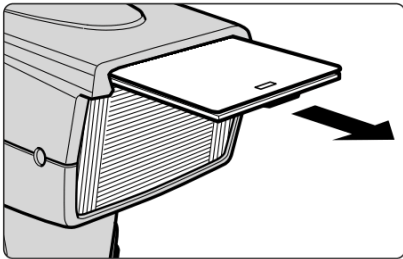
How to use the SF33

Test the SF33



1. Press the POWER button for approx. 2 sec. to turn the power on.
2. Press the MODE button to select specific mode.
3. Press the +/- button to increase or decrease the output power .
4. When the Charging indicator is green, press the TEST button to fire the flash.
5. Mount the flash on the camera hot shoe and start to use the flash.
6. If you do not use it, press the POWER button for approx. 2 sec. to turn the power off.
7. **Note: In the manual mode, the flash will automatically power off after 60 minutes of inactivity.**

Using Built-in bounce card

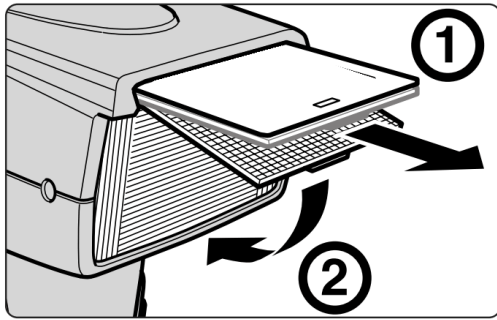


In bounce flash photography, use the built-in bounce card to create a highlight in the subject's eyes, making the eyes look more vibrant.

As shown in the illustrations, pull out the wide-flash adapter and while holding the bounce card, slide the wide-flash adapter back into place inside the flash head.

Tilt the flash head up 90° to use this feature most effectively.

Using Built-in wide-flash adapter



Slowly pull out the wide-flash adapter all the way, and position it over the flash head. Then slide the bounce card back into place inside the flash head.

Increases the angle of coverage to match a 14mm or 17mm lens.

Manual Mode

1. In some occasions, you may need to use the manual exposure instead of automatic. You can set the flash setting to manual mode, and choose the exposure flash power level from 1/1 to 1/64.
2. Select to MANUAL mode (MANUAL indicator will on)
3. Also the power output level light is on. Power output is 1/64. Press “+” button to increase or “-” button to decrease the power output level.
4. The selected power output level will be save until the power is off.
5. Camera setting TV(for Canon) / S, A, or M mode.
6. Set the F-stop and the shutter speed, point to subject and press the shutter button to take photo.

Optical control the flash

The SF33 features an optical slave control function. There are two different slave modes.

SLAVE A: In this mode, the SF33 will fire with the first flash. If you are using this mode, be sure to turn off any pre-flash/red eye reduction mode on the main flash.

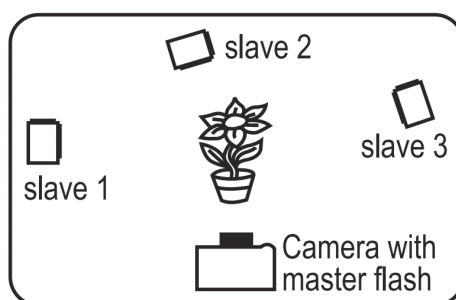
SLAVE B: In this mode the, the SF33 will ignore the pre-flash used by many cameras to reduce red eye. Note: Different cameras and flashes use different pre-flash parameters. If you do not get correct exposure in this mode, the pre-flash parameters of the master flash may not sync properly and you should use the SLAVE A mode.

Optical mode setting

Press the mode button to SLAVE A or SLAVE B mode

The first light of power levels is 1/64, press “+” button to increase the power output level, 1/64→1/32→1/16→1/8→1/4→1/2→1/1.

Optical control using method



1. Use the built-in flash on your camera or an external flash as a master flash.
2. Set one or more SF33 flashes in your desired position.
3. Press the test button on your master flash or make a test exposure to ensure the slaves are seeing the master flash and fire accordingly.

- **NOTE: Do not put any barrier between the master and slave flash. The barrier will block the optical signal. In the slave mode the SF33 will go into the power save mode after 30 minutes of inactivity.**

Specification

Flash index: 33

Circuit design: IGBT

Power source: 4 "AA" alkaline or NI-MH battery

Battery life: 100-1600 times

Recycle: 3 seconds NI-MH battery, 6 seconds alkaline

Wireless Remote Flash: built-in slave feature (Slave A, Slave B)

Power Ratio: 7 steps (1/1, 1/2, 1/4, 1/8, 1/16, 1/32, 1/64)

Power saving: Auto Power off after 60minutes in M mode.

Color temperature: 5600K

Dimension: 72mmX168mmX56mm

Weight:252g

Bounce and Rotating Head:

Bounce up: 45°, 60°, 75°, 90°

Bounce left: 30°, 60°, 90°, 120°, 150°, 180°

Bounce right: 30°, 60°, 90°

Diffuser and Reflector:

Wide flash adapter and catch light reflector

Soften the light on the subject

Troubleshooting Guide

If a problem occurs with the flash, first refer to this Troubleshooting Guide. If this Troubleshooting Guide does not solve the problem, please email [JJC service@jjc.cc](mailto:JJC_service@jjc.cc)

Power does not turn on or the flash does not fire

- Make sure that the batteries are installed in the correct orientation.
- Insert the mounting foot into the camera's hot shoe all the way and secure the SF33 to the camera.
- If the flash recycling time takes 30 sec. or longer, replace the batteries.
- If the electrical contacts of the SF33 and camera are dirty, clean the contacts.

The bottom of the picture looks dark

- You are too close to the subject. Please move away from the subject.
- Pull out the wide-flash adapter to extend the flash scope of this product to 17mm.
- Remove the lens hood if attached.

The slave unit does not fire

- Position the slave unit in clear view of the master unit, without obstacles between them.
- Use different slave mode (SLAVE A or SLAVE B).

- **All specifications above are based on JJC's testing standards.**
- **Product specifications and external appearance are subject to change without notice.**

About trademark

- JJC is a trademark of JJC Company

ONE YEAR UNCONDITIONAL GUARANTEE

If for any reason, this JJC product fails within ONE YEAR of the date of purchase, return this product to your JJC dealer or contact service@jjc.cc and it will be exchanged for you at no charge (not include shipping cost). JJC products are guaranteed for ONE FULL YEAR against defects in workmanship and materials. If at any time after one year, your JJC product fails under normal use, we invite you to return it to JJC for evaluation.

Shenzhen JinJiaCheng Photography Equipment Co., Ltd.

Office TEL: +86 755 82359938/ 82369905/ 82146289

Office FAX: +86 755 82146183

Website: www.jjc.cc

Email: sales@jjc.cc / service@jjc.cc

Address: Main Building, Changfengyuan, Chunfeng Rd, Luohu District, Shenzhen, Guangdong, China

